

SITWORKS

tyc tonnyapcompany.com
ImPermanence
PRODUCTIONS

E-PLUS®
E-PLUS GLOBAL



photo credit: Chipzter Tee

moreland
art &
performance
festival

*house - p
body*

mapmoreland**1**

MAPFEST
3 FEB
2019
siteworks

map moreland: house-body

Where can independent artists voice their inner spirit without compromise? **MAP Moreland** begins its inaugural festival at Siteworks, Brunswick.

MAP's platform is uncomplicated, inclusive; embraces mix-disciplines, and importantly, steps outside the demands of commoditization - going beyond the need to position themselves to yield to marketing and selling mechanism. Or even predetermined selection criterion of the dominant institutions, hence reclaiming the vigor and energy in being unique. This platform is yours.

Thank you artists for expressing your desire to show your creativity, to knit collaborative community of friendship and inter-support.

MAP embodies a very wide range of audience. No one can help but recognise the returning to the basic drive of why are artists and why we do what we do - back to the original genesis of creative impulse.

Tony Yap Artistic Director
Takashi Takiguchi Producer



MAP Moreland begins its first festival at Siteworks in Brunswick. The theme is on the ancient Greek concept of *Arachne's Twine*.

MAP Moreland will inhabit the main two-story 'house' at Siteworks. Artists perform and install their work within the labyrinth of rooms like nooks within 'a house-body'. *Arachne's Twine* relates to the creation of a network as in the weaving of a web. Every artist's work will represent a kind of thread in a spider's web that exists in a 'nook' or a room.

In this space the artists are not so much interpreting narrative, but rather, tracing trajectories to make perceptible what they can do. Here in this spacio-temporal event, lines of narrative may emerge from undertones created when the artists map or cartograph their nomadic passages. This is done using dance, sound, vision and movement without biases of formal language.

MAP Festival began in 2008 in Malaysia as the Melaka Arts and Performance Festival. Over the last decade, the model of site-

specific performances have co-inspired sister festivals with *Arts Island Festival & Pelem Arts Festival (Indonesia)*, *Bandung International Arts Festival (Indonesia)*, *MAP Delhi (India)*, *MAP Rainbow (Regional Victoria, Australia)*, *Buffalo Fields Festival (Bangkok, Thailand)*, and Melbourne's own *Mapping Melbourne*. All these festivals began with site-specificity and have created platforms for independent artists from different disciplines, cultures and levels of accomplishments to present works in individual, collaborative and always experimental creative practice.

MAP Moreland acknowledges the Wurundjeri people of the Kulin nation, the traditional owners/custodians of the land on which we meet. We pay our respects to the Elders past and present.





NIM MAM KIN

– Transmigrating The Soul

– Installation / Dance (20 mins)

Substantial form of eternal wisdom. We reunite ourselves with our original patterns. A depiction of the whole human race. The language of the mystic arts is as old as civilisations. It's about our astral projection. Everything is from the same energy. Spirit is the destination. Silence the ego and natural talents arise.

Outer Courtyard, 5pm opening performance

Kathleen Gonzalez

Kathleen Gonzalez is a Melbourne based Colombian experimental artist, ethnodance writer, dance maker and performer, cultural producer, artistic director of Tunjos y Cantaros Ethnologic Dance Company. Kathleen's practice combines multicultural, multispiritual and global ancestral origins, investigated through dance laboratories and ritualistic experiences connecting the inner and outer self. Kathleen's work explores the space between the rationality of the physical senses and the mystery of psychic and mythical lands, combining unusual, experimental, creative and inspirational new performance processes. She has named the concept Ethnodanceology Art.



DANSYARI-断捨離

– Multi-mediums (30 mins)

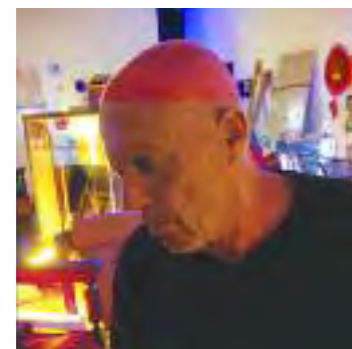
his new year is the time to be rid of the "old" making room for new space, time and allowing new flows in energy. Sweet Beens duo is a collaboration of dance by Kiki Ando and traditional Japanese music performed by Ayako.

Entrance courtyard, 7pm

Kiki Ando & Ayako Fujii

Kiki Ando and Ayako Fujii are Japanese performers currently based in Melbourne. Kiki's practice is influenced by traditional and contemporary Japanese forms of dance and is currently exploring Javanese "secrete spirit" movement dance. Ayako Fujii is a multi instrumentalist, composer and arranger from Osaka since 1995. She has been performing traditional Japanese instruments like Shinobue Flute, Taiko Drums and Sanshin Banjo in several groups including A.YA. Ayako has also been collaborating with Butoh dancers since 2015. Kiki and Ayako collaborating in Melaka Festival 2016 in Malaysia





moving out P1 + P2

– Music and movements (2 x 30 mins)

How do we move out of the home ground? Out of the safety of the known and familiar? Domenico is mobile in his musically equipt van offering italian poems an improvised sound. Ready, and moving out.

P1 with **Brendan O'Connor & Tony Yap**
P2 with all artists in a final webbing.

Inner Courtyard

P1 6-6.30

P2 7.30-8pm (Group Finale)

Domenico de Clario

Domenico is an interdisciplinary artist, academic, writer and musician. He was born in Trieste, Italy. He studied architecture and town planning at Melbourne University, painting at Milan's Accademia di Belle Arti di Brera and lithography at the Accademia di Belle Arti di Urbino. In 1998 he was awarded an MA and in 2001 a PhD in performance studies from Melbourne's Victoria University. Since 1966 Domenico has presented more than 300 solo and group exhibitions, installations and performances and has published a number of books and CDs. His work is represented in major public and private collections both in Australia and worldwide.



An invisible thread

– Installation/visual art (durational)

Through sound and sculptural elements, An Invisible Thread interlaces an ordinary architectural space with traces and instances, images and memories. Two performers adjust, disturb and configure an array of coloured wooden battens. Ephemeral structures grow and reduce in response to the shifting lush soundscapes spun by two musicians. Morphing forms coil through the space, moving away from and towards the force of sound that binds them.

L1 Foyer, 5.30pm Durational

Cobie Orger, Louise Lavarack, Andre Solano & John Kostaras

Cobie Orger, Louise Lavarack, Andre Solano and John Kostaras have worked in various configurations over the years exploring music, dance, performance, sculpture, and installation. They are interested in the dialogue that occurs within artistic collaboration and the consequent trajectories, methodologies and forms that emerge.





Inflatable Situation

– Multi-medium (durational)

A room. Small. Tall. Amplified quiet. Deflating skins. Transgressing borders. Exchanges in mass, movement and economy. Disrupted usage. Inflated feeds. Conflated lives. We have a situation. Where will the rest of us rest? Hunter with sound and Sinatra with the body will work with the physics, political, physical and phenomenological of a room within Siteworks with a rise, a fall, a rise, a fall over a one hour durational period.

L1 Back Room 5.30pm Durational

Myfanwy Hunter & Jonathan Sinatra

Sound+visual artist Myfanwy Hunter collaborates with dancers, theatre makers and contemporary music ensembles on viola, fretless bass guitar, vocal adaptors, and micro sound generators to create immersive interactive sound works. www.myfanwyhunter.com

Jonathan Sinatra – contemporary dancer with Russell Dumas’ Dance Exchange. Currently undertaking a residency through the City of Yarra’s ‘Room to Create’ program to expand his dance and photographic practice. www.instagram.com/jonathan_sinatra



TWO

– Dance (15 mins)

Midway on our life's journey I found myself in dark woods, the right road lost. To tell about those woods is hard, so tangled, rough and savage that thinking of it now I feel the old fear rising - death is hardly more bitter.” Dante’s Divine Comedy

Bottom Verandah, 6.30pm

Anna White & Yvette Grant

BIOGRAPHY - artist/s

Yvette Grant is a teacher, writer, creator and performer, and a lifelong dancer. She has a background in Classical Ballet and pursued her passion for dancing Tango in Buenos Aires for four years. She recently studied Art and Community Engagement at The University of Melbourne, and her current explorations are in improvised performance.

Anna White works across the mediums of performance, photography and painting. She has practiced as an abstract painter for decades, working intuitively with chance and improvisation. Participation in a Butoh workshop in 2016 provided the catalyst to explore these themes using the body and movement and rekindled a long-held passion for dance.



I Hold the Great Rack

– Music (30 mins)

"Reuben, I think we were flirting or maybe it was just me flirting with you? Ah well, ah well, ah well. Ah well it's all for the promotion of my band.

And, you know, any press is good press and any mess is good stress. It's all good.

No worries. I've forgotten already what you even said. Nah. It's in the past, it's whatever.

Oh, dont even worry about it."

Reuben Lewis & Emily Bennet - trumpet, vocals & electronics

GL Kitchen, 5.15 pm

Reuben Lewis & Emily Bennet

Reuben Lewis, from the popping psychedelic jazz collective, *I Hold the Lion's Paw*, and Emily Bennett, from the landscaping surrealist improvised trio, *Great rack and empty club reverb*, clash in the meta-named duo, *I Hold The Great Rack*. Lewis hustles on trumpet through an outboard of effect pedals as Bennett speaks her mind via an outdated Korg multi-effects rack.



Hearth

– Video (durational)

Working with and against notions of domesticity and the politics of private space, Gretel Taylor etches an uncanny presence of woman in the home.

GL Kitchen, 6 pm

Gretel Taylor

Gretel Taylor has evolved a site-responsive performance practice exploring relationships between place, body and identity. Historical, ecological, cultural and social contexts inform her work, which draws upon dance improvisation, live art and Body Weather. In addition to her solo practice, Gretel is a core artist of Environmental Performance Authority (EPA).

Gretel completed a practice-based PhD in 2009 and has taught Performance at Victoria University, RMIT and Monash. In 2018 she curated performative exhibition Force of Nature at Yarra Ranges Regional Museum. She is currently co-directing Dancing Between Two Worlds with Shaun McLeod and Indian Australian artists in Melbourne's west.





Drills

– Physical theatre /Music (Durational)

A pathetic masculine body, covered in trash, fake money and muck. Swimming in a sea of cheap advertising jingles. Smart phone imposed hostile self surveillance. Searching for a way out, the body knows only to go deeper into the breathless material. 'There is no such thing as ethical consumption under late capitalism' DRILLS into the breathless body, alone, inauthentic and ashamed. Long ago lost, the thread of instinct and faith. Unending sacrifice in the evasion that we are utterly lost.

Bottom Verandah 5.30pm Durational

James Curtin

Years of erratic spoken word and storytelling in the Melbourne scene, slowly degrading into gothic physical theatre. Butoh out festival 18', The Body Speaks, Oil man at environmental fundraisers. Oussou Spoken Word Host 15'-17'. Honours in philosophy from Melb uni, thesis on the physical boundaries of human cognition. In search of the Beige.



Imago

– Dance (20 mins)

A good friend, with keen insight, fortuitously invited me to an experimental music gig at Testing Ground at the weekend, where I met and heard this haunting and captivating composition created by **Fiona Hill**. Described as Electroacoustic, her compositional practice creates scores that "occupy an experimental, freethinking yet universally beautiful place". With sound, body, time and space, together we give voice to the silenced.

GL Rm1 6.15m

Helen Suzanne Smith & Fiona Hill

Helen is a physical theatre performer, teacher and director whose main influences have been Butoh, an avant-garde genre of dance theatre from Japan; Suzuki actor training, also from Japan; Viewpoints originating from the US, and more recently, Kathakali, an ancient traditional form of Indian dance theatre. Helen was first introduced to the world of Physical Theatre, through Brisbane-based company, Zen Zen Zo with whom she has trained, performed nationally and internationally since 1993. Helen relocated to Melbourne in 2010 to pursue a Masters in Theatre Research at Monash University. She is most at home when she is exploring innovative combinations of her practice.



One Sky

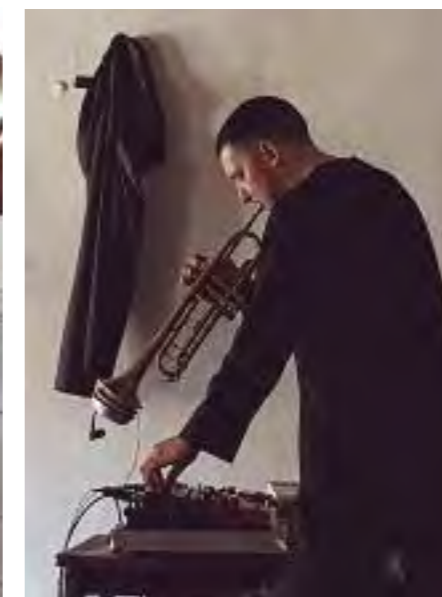
– Multi-mediums (30 mins)

A series of Time Lapse based works under our One Sky projected into the space and onto the Audience

L1, Toilet 5-8pm (durational)

Jeremy Kruckel

Canadian born Visual Artist based in Australia.



Kill Ourselves

– Dance/ Performance Art (30 mins)

This series of *Dionysus Molecule – Kill Ourselves*, Brendan and Tony abandon their bodies and their romantic ideas of making visible the invisible or notions of infinite-cum-finite in the creative process. Here is a lounge room and two men entwined much in a web of a commix. What can be in-penetrable in this weave? Reuben is the third element in interweaving his sonic body in the loungeroom.

GL Rm1, 7 pm

Tony Yap, Brendan O'Connor & Reuben Lewis

Tony Yap, Malaysian born, is an accomplished dancer, director, choreographer and visual artist. He has been a leading figure in inter-cultural discourse and received Asialink residential grants to work in Indonesia in 2005, and 2008 and a Dance fellowship from the Australia Council for the Arts. Tony is the founding Creative Director of MAP Fest. www.tonyyapdance.com

Brendan O'Connor, Ireland born, received his accreditation as a professional performer in The Netherlands, and has since settled in Melbourne. He graduated in dance at the College of Dance, Monkstown, was accepted to the Laban Centre London and the Fontys Dance Academy in the Netherlands. A trip to Ghana found his interest in strong and psycho-physical direction in his consequent connection his work in the slums of New Delhi. www.brendanoconnordance.com

Reuben Lewis: (see *I Hold the Great Rack*) www.reubenlewis.com



Bodies and Creatures of Time

– Multi-mediums (30 mins)

Bodies moving through past, present and future

GI/L1 Staurway, 5.30pm

Lim Paik Yin

Lim Paik Yin is an interdisciplinary artist working with photography and performance. She started choreographing and performing site specific works in Malaysia and Indonesia from 2014 onwards. Currently she is pursuing her Masters in Visual and Media Anthropology after 5 years working as a photo researcher in a stock photography company. Her photography work has since evolved to including her practice in performance. "By using the presence of oneself and transforming everyday space through performance, I can view the self as a separate entity and thus intervene in my everyday routine creating a temporal opportunity to express what is unspoken or hidden."



forgotten self

– visual art

Mixed media on fabric ... draped on site. contemplating my forgotten self thro drawing collage... attached to fabric and my physical presence

GL Corridor

Dianne Dixon

Dianne is an Australian artist living in the rural town of Rainbow in northwest victoria.

Dianne's creative oeuvre is distinctively rural Australian and significant in its contribution to a diverse and sophisticated art practice in contemporary Victoria. Her creative work is fast gaining recognition along with new audiences with her leadership and presence as creative collaborator in the Asian region.

Dianne has recently established an artist in residence program in Rainbow her role includes liaison with collaborators like myself, other urban artists to participate in her art Residency while developing international links especially to the Asian countries. As an artist she is highly accomplished and recognized both in Australia and overseas





Come In Unity

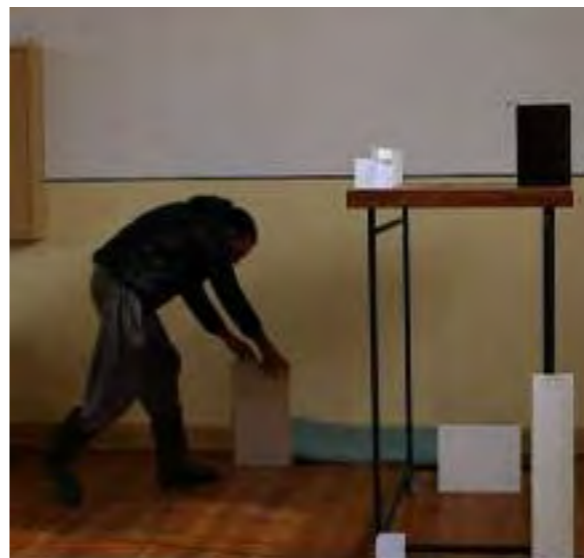
– Dance (20 mins)

Come In Unity is a performance dedicated to our mother Earth and her Earthlings. It aims to raise awareness to the bliss that it is to express one's truth; all inclusive and spreading out small acts of unconditional loving in every aspect of experiencing and synchronising our journeys. Compassionately moving forward on the spiral of our Wholeness, the Oneness of our Universe.

L1 Rm2, 6.30pm

M-C Jypstir

M-C Jypstir also known as MaCrae Zee ButtaFly came on the way from a small tropical island known as Mauritius. Not estrange to movement, from a very young age, continue to embrace the multicultural and fusional music and art style from her homeland but also the worldwide forms and expressions. Social activist by day and Burlesque performer by night. For the past three years she has been studying and enjoying different forms and style of dance and movement on this wide spectrum appear, Bharatanatyam, Butoh, experimental dance movement, Poi, Martial arts, and much more. She does not shy away from experiencing other ritualistic dance movement while she studies dance movement therapy.



Object Obedience

– Multi-medium (Durational)

This durational performance explores how motion is activated from the position of the body being an object of obedience. It investigates how the performer subjects themselves through embodiment experimentation on actions of chance and causality. A table, panels, boxes and boards, fall and shift in order to subject the body to move within these parameters over a long period of time. The sculptural construction of objects choreographs the aesthetic composition of the work, which changes over time

Entrance Varendah,
5.30pm durational

Christos Linou

Linou is a cross-disciplinary artist with three decades of work in dance, theatre, opera, film and TV. He was awarded a Masters in Fine Arts scholarship at Melbourne University, researching durational performance. He developed 'Naked Peel' a 12 hour performance installation and presented his research at the World Dance Alliance in Singapore and performed it in Melbourne, Amsterdam and Melaka. The Marina Abramovic Institute in New York recognised his work as 'Highly original and deeply personal' and published it on 'IMMATERIAL' a digital journal for durational works and screened it at the As One Festival in Athens. He has toured one man shows in Singapore, Paris, Amsterdam and Australia.



Kay Pacha

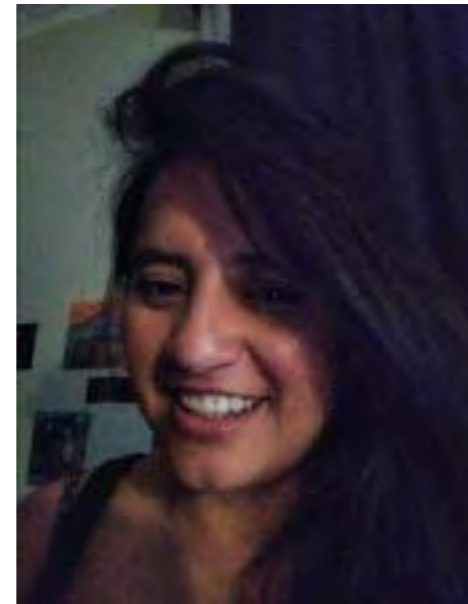
– Dance / Eco Butoh (20 mins)

Kay Pacha is a corehography of fancy dance and magic, thought of the eco dance of the mind..... The environment with its radical changes have altered the life of animals, plants and all nature. This is a performance of colours, magic and hopes

Green Courtyard, 6pm

Ebem Toa

Ebem Toa is from Ecuador and she has degree in mine and pantomime "school of formation in mine and pantomime and Tai Chi Mime "master Pepe Bacas Ecuador ,technique Ettenie Decroux (France).She is also a Butoh dancer choreographer, Creative costume designer for theatre and dance; Performance designer and visual artist; Researcher of anthropology dance and ancestral techniques, comedy art, circus and music.



FGFR3

– Dance (15 mins)

Rather than being deficient in a protein that aids growth, I received too much. It has been likened to a plant being overwatered. Too much of a good thing is not a good thing. My performance explores the idea of receiving too much of a good thing; being overwatered. I exist in this body. I celebrate in this body. I mourn in this body - this body that received too much of a good thing.

Entrance Courtyard, 5.45pm

Leisa Prowd

Leisa Prowd is a dancer, performance artist & life model based in Melbourne. Her practice involves explorations from butoh, physical theatre, yoga & burlesque. Leisa performs with two dance theatre ensembles - Weave Movement Theatre and Rawcus Theatre Company and has appeared in several productions with both companies. She has performed in Melbourne, Adelaide and internationally at Festivals in Las Vegas and Berlin.





Aftertouch

– Dance (30 mins)

I can feel you even you are not with me as I feel myself. My body is there and here. I dance, I move with you.

I am a shiatsu therapist. My hands (touch), my ears (listen), my eyes (observe), my nose (smell) are the tools to get to know (scan) the body. I need a body of another person for my practice.

A shiatsu futon mat will be my stage but without others body. I will be you and me.

L1, Rm1, 5.45pm

Tomoko Yamasaki

Tomoko Yamasaki is a performer, writer, and a qualified shiatsu therapist. She grew up in the family cabaret in Nobeoka (Miyazaki), Japan. After her arriving in Melbourne in 1994, began training at Women's Circus to express herself using her physical body as English was new to her. She graduated from John Bolton Theatre School in 1998. And she has been participating in Butoh Out since 2004. www.tomokoyamasaki-shiatsu.com



Careful with that fairy

– Multi mediums (15 mins)

Fairy - A humanoid creature with magical powers and sometimes butterfly wings. Fairies can be any size from the size of a seed to human size. Known to be pranksters, it is best not to get on their bad side. Dwarves, leprachauns, satyrs, banshees, nymphs and elves can also be considered fairies..

GL, Toiet, 5.30pm

Nick Davitashvili & Chen Yi

Nick Davitashvili is a cybersecurity geek, environmentalist and musician from Tbilisi, Georgia. He dropped out of music school when he was 7, but circled back by playing guitar and bass in ska and punk bands against the backdrop of crumbling Soviet regime. After encountering Indian classical music he was inspired to embark on an overland pilgrimage from Georgia to Varanasi in India to study tabla with Pt. Dhananjay Mishra and later sitar at Shahid Parvez Khan academy of music in Phoenix, Arizona. Recently, he performed ethnically infused non-idiomatic electro-acoustic music with Reso Kiknadze and recorded an album with his band Z for Zulu produced by Dimitri Tikovoi of 140dB (UK).

Yi Chen, originally from Nanning, China, began her dance journey at Subbody Butoh School and was influenced by the Javanese traditional and contemporary dance styles. She also got inspired by the perspective of multiple indigenous cultures she has encountered during her travels. She is experimenting with dance in site-specific contexts like forests, rivers, construction sites, recycling facilities and urban settings to discover the essence of native cultures and landscapes. Yi believes that the dance stage is any place where the spirit exists.





Refined

– Multi-Medium (30 mins)

Ladies, lace, fine china, an angel harp, a bit of sugar, and...I'm forgetting something... Never mind. How are your investments going darling?

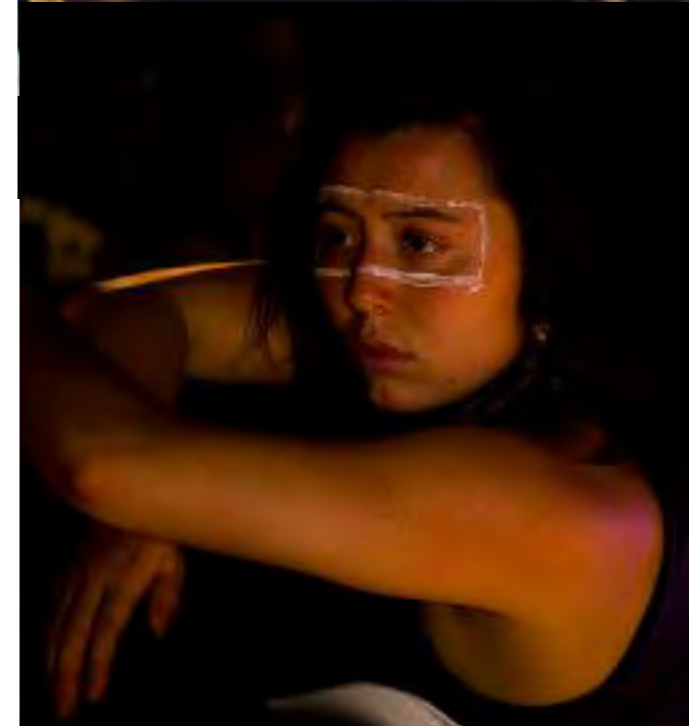
Kendra Keller (aka Lady Longdrop) continues her investigation of Whiteness, colonial-capitalist barbarity, normalcy, niceness and amnesia, in a new experimental collaboration with dark-angel of the harp, Anactoria (Tamlyn Magee).

Bottom Verandah 5pm

Kendra Keller & Tamlyn Magee

Kendra Keller (aka Lady Longdrop) is a multidisciplinary artist, finding expression for her poetic vision on the page, the stage, in forests and on hillsides, throughout so-called Australia and Asia. While best known as a poet and spoken word diva, embodied performance, drawing on training in contemporary Asian and European performance forms, is a growing part of Longdrop's flow. Delicately weaving personal, political and mystical themes, she dodges defences and gets hearts by the gonads. More info: ladylongdrop.com.

Anactoria (Tamlyn Magee) is an electric harpist and vocalist based in the musically exceptional small town of Candelo, NSW. Her work falls under an experimental category of folk/pop, and is informed by an intense love of performance and an infatuation with vulnerability and honesty. In May 2018 she released her debut EP, 'Twentythree', and is currently undertaking a Creative Development Fellowship through CreateNSW, which has her based in Melbourne to develop work for an upcoming album. More info: www.anactoria.com



Room Mates

– Dance (15 mins)

Despite the walls between us, we connect to people we live with on different levels. This group performance (Lisa Dethridge, Kathleen Gonzalez, Mila La Hae and James Jahree) explores how even casual physical connections can leave subtle invisible traces of "relation-ship" that permeate daily live whether we're together or apart..

L1 Rm1, 6pm



Lisa Dethridge, Mila La Hae & James Jahree

Lisa Dethridge lectures in Media and Communication at RMIT and is a member of Tony Yap Dance Theatre. She has performed and exhibited digital art in Europe, USA and Australia. She has performed, written and produced media materials for producers including Fox, Warner, Working Title & MTV. She is the author of Writing Your Screenplay and of stage play The War Against Short Trousers (Chapel-off-Chapel, Melbourne.) Digital art exhibitions include Science Museum of Trinity College Dublin and Pratt Institute of Arts and Engineering, New York. She is a member of recording group Artificial Organs whose music is released on Domestica Records, Barcelona

A dancer, performer, artist, musician, poet, and techno-shaman, **JaRee James** uses his practices in shamanic trance, ecstatic dance, improvisation, acting, and poetry to convey meaning into social, personal, and metaphysical art. Stripping himself of himself, JaRee James embodies fluidity and transparency to become the vessel of the artist. To experience life on the tremor of the unknown.

Mila La Hae is a rootless mover, acrobat, yogi and performer. She has been living a nomadic life for three years now, drawing inspiration from her travels. He is fascinated by the ties that bind us together, the baggage we all carry within, by the force of nature, by shapes and forms, by the power of thoughts and the feeling of embodiment. Witness her add her unique spice to the grand soup of life.